

SecuritEase® ASX Gateway

The SecuritEase ASX Gateway allows you to transparently, simply and affordably integrate your business systems with the ASX Clearing and Settlement System.

The SecuritEase ASX Gateway is a single interfacing system that allows your systems to operate with the ASX Clearing and Settlement System irrespective of whether it is CHES as at present or the ASX Distributed Ledger based CSP (Clearing & Settlement Platform) in the future.

Replace legacy CHES interfacing systems with the SecuritEase ASX Gateway and get: a feature rich, reliable, scalable, high performance, futureproof gateway built on modern, mainstream technology.

The SecuritEase ASX Gateway CHES interface supports a broad set of CHES messages that meet the requirements of: AMO participants, Clearing and Settlement participants, and mFund brokers and PISPs.

SecuritEase offers a smooth transition from the current CHES messaging interface to the CHES Replacement AMQP ISO 20022 messaging interface. The ISO 20022 interface will be provided for free to SecuritEase ASX Gateway licensees.

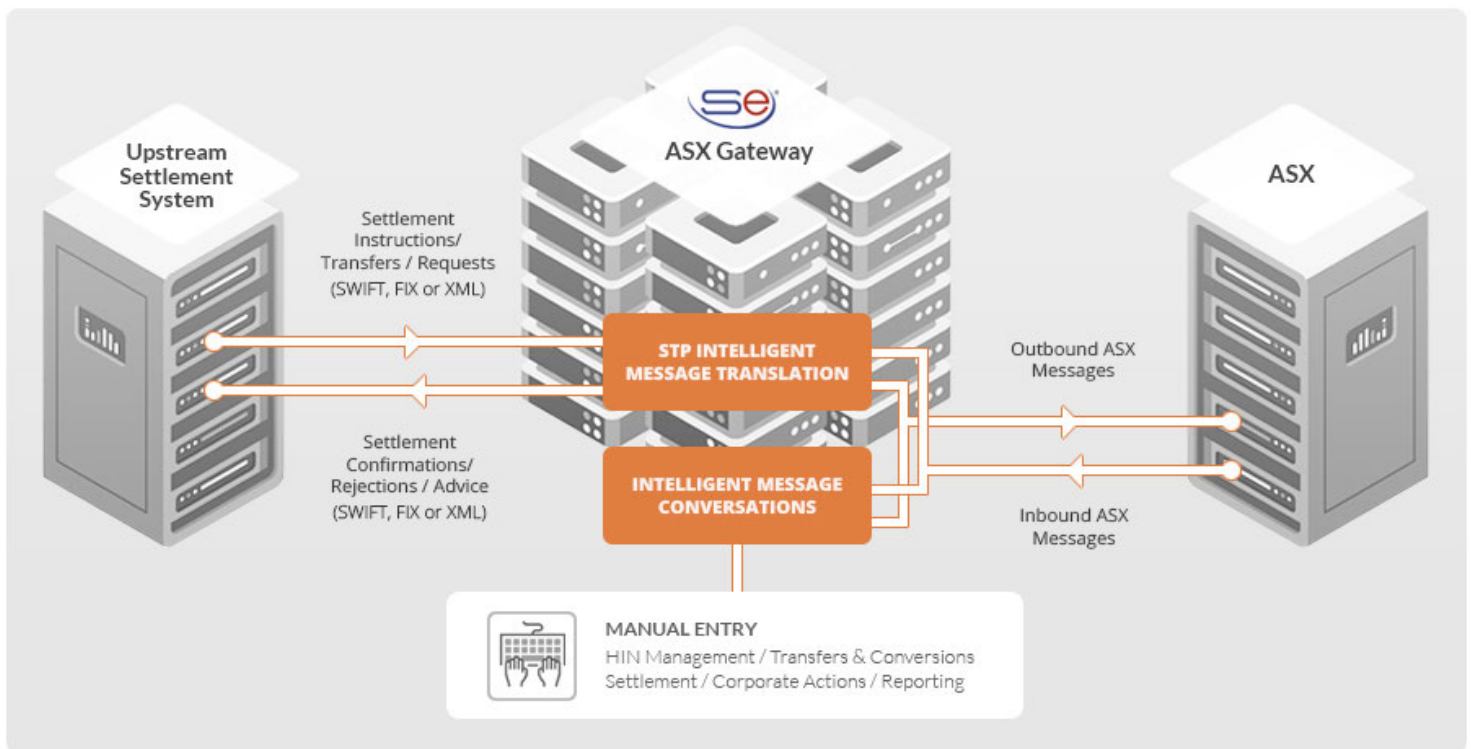


Figure 1 - SecuritEase ASX Gateway Deployment Architecture

As illustrated above, combine the intuitive SecuritEase graphical user interface for manual ASX processing, with standardised communication interfaces (ISO 20022, ISO 15022, FIX, XML), the quick and easy ASX message batch file loading system, or message transport layers like IBM® MQ, to link into your in-house systems to get a local market interface that suits your specific needs.

The superior standards-based technology used in the SecuritEase ASX Gateway and the responsive expert service offered by the SecuritEase team means lower cost, higher functionality, and quicker time to market for new initiatives.

ASX Settlement Interface Now and In The Future

Adapting corporate systems for use in the Australian market currently requires an intelligent bi-directional CHES interface and a company that understands CHES messaging and its use for business operations. SecuritEase gives you both.

The intelligent SecuritEase ASX Gateway accepts messages from upstream business systems, performs message translation to create fully formed CHES messages and handles all communication with CHES, automatically accounting for the multi-part conversational nature of CHES as necessary. Furthermore, where it is necessary to hold a local conversation with CHES without reference to the upstream system, the SecuritEase ASX Gateway handles conversation autonomously, notifying the upstream Gateway only when the conversation is complete.

Inbound CHES messages are translated for consumption by upstream business systems. Those systems can use: FIX, SWIFT (ISO 20022 and ISO 15022), XML, Industry Standard APIs (licensed separately) or Flat Files for bi-directional communication with the SecuritEase ASX Gateway.

You can use the intuitive SecuritEase graphical user interface for ASX specific business operations not catered for in upstream corporate systems including:

- Full HIN Management and SRN processing
- Conversions and Transfers
- DVP settlement; ability to generate instructions, monitor matching status, create match responses to incoming allege messages
- Corporate Action processing including takeovers
- Management of settlement obligations and real time stock positions
- Reconciliation and exception reporting and processing
- Comprehensive CHES reporting



Tap into a comprehensive source of expertise on CHES messaging and ASX settlement processing through engagement with SecuritEase CHES consultants.

Your SecuritEase implementation can be hosted on your premises, in the ASX's ALC or on commercial cloud infrastructure – the choice is yours!

When it is time to replace CHES, the SecuritEase ASX gateway will support the ISO 20022 message set you need to continue processing. No change required. No additional licence cost.

Intuitive SecuritEase® Graphical User Interface

Manually Initiate CHES Messages

The SecuritEase ASX Gateway provides a full graphical user interface that can be used to manually enter and send CHES messages. This allows you to immediately operate as a CHES participant in unforeseen ways.

Helpful hint tool tips are available to guide you through data entry. Mandatory fields are identified and must be completed correctly before a message can be sent. Input data is checked on a field by field basis and helpful messages are issued when correction is necessary. This allows operation with only limited CHES knowledge.

Multi-user access to the SecuritEase ASX Gateway is governed by a comprehensive roles-based security system. This allows you to provide CHES access where it is needed but manage any risk associated with access to data.

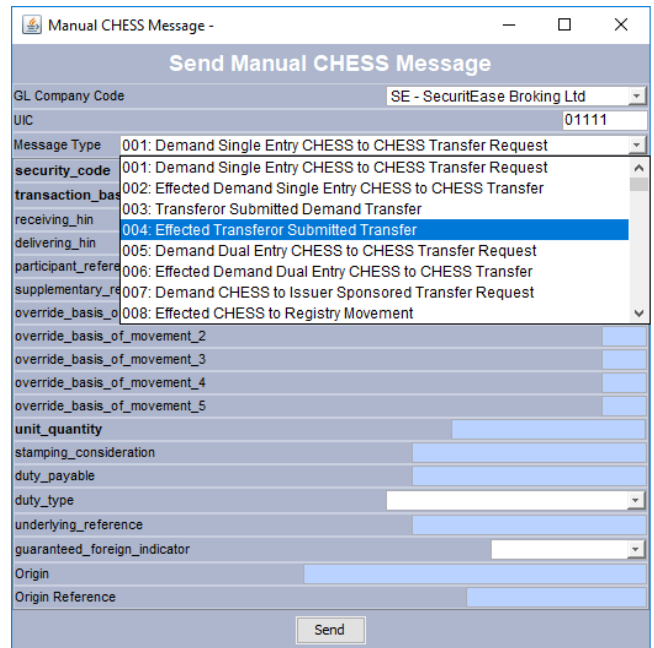


Figure 2 - SecuritEase Manual CHES Message Creation

View CHES Message Conversation History

The CHES Message Details screen shown in Figure 3 is used to review messaging traffic to allow investigation and resolution of errors and reconciliation events.

Optionally select a subset of messages based on specified selection criteria. Double click to drill down into message details.

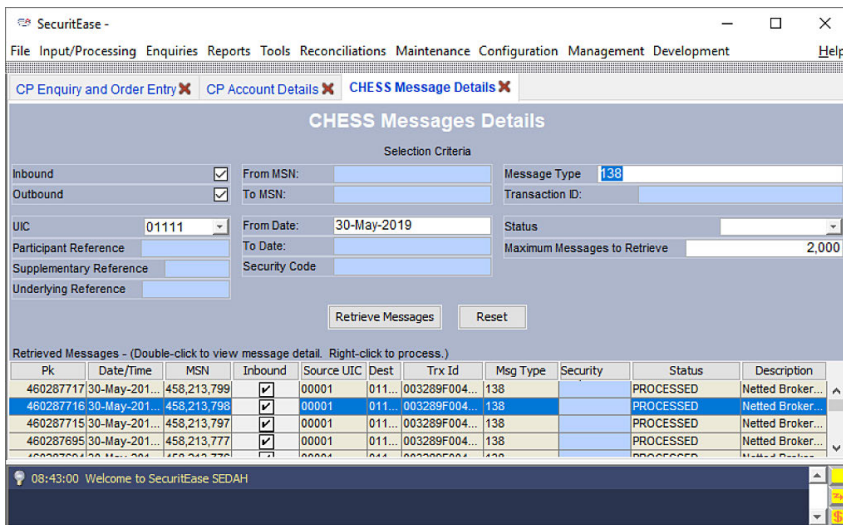


Figure 3 - SecuritEase Manual CHES Message Details

Message details including all field data are displayed as are the related messages. The display shown in Figure 4 has all information relating to a particular CHES conversation in a single location.

Full audit logs are kept for all messages. The details of each message sent or received are recorded along with individual user names for compliance and monitoring purposes. The high capacity database allows for a permanent on-line record to be kept.

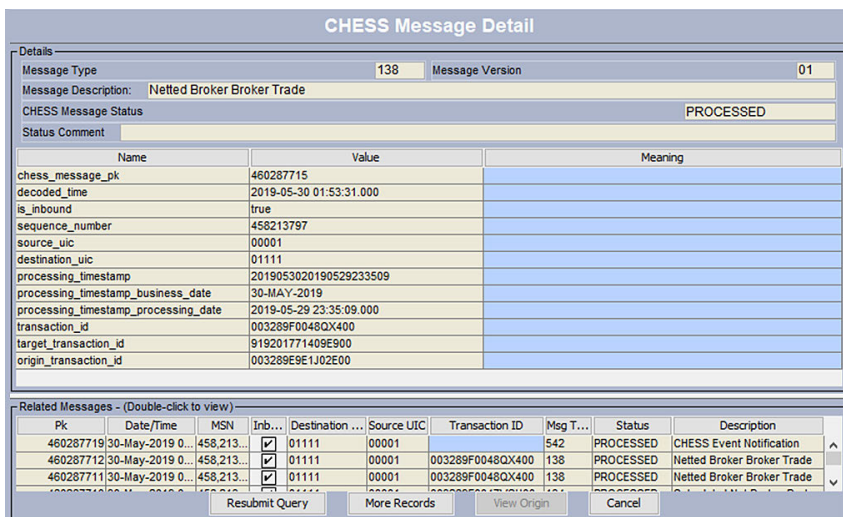


Figure 4 - SecuritEase CHES Message Parameters and Conversation

Monitor Gateway Performance and Status

A comprehensive gateway queue and performance monitoring system is provided so that your operations team can keep an eye on gateway performance. The “CHES Session” panel is normally green showing that all is well. If there is a problem, it turns red.

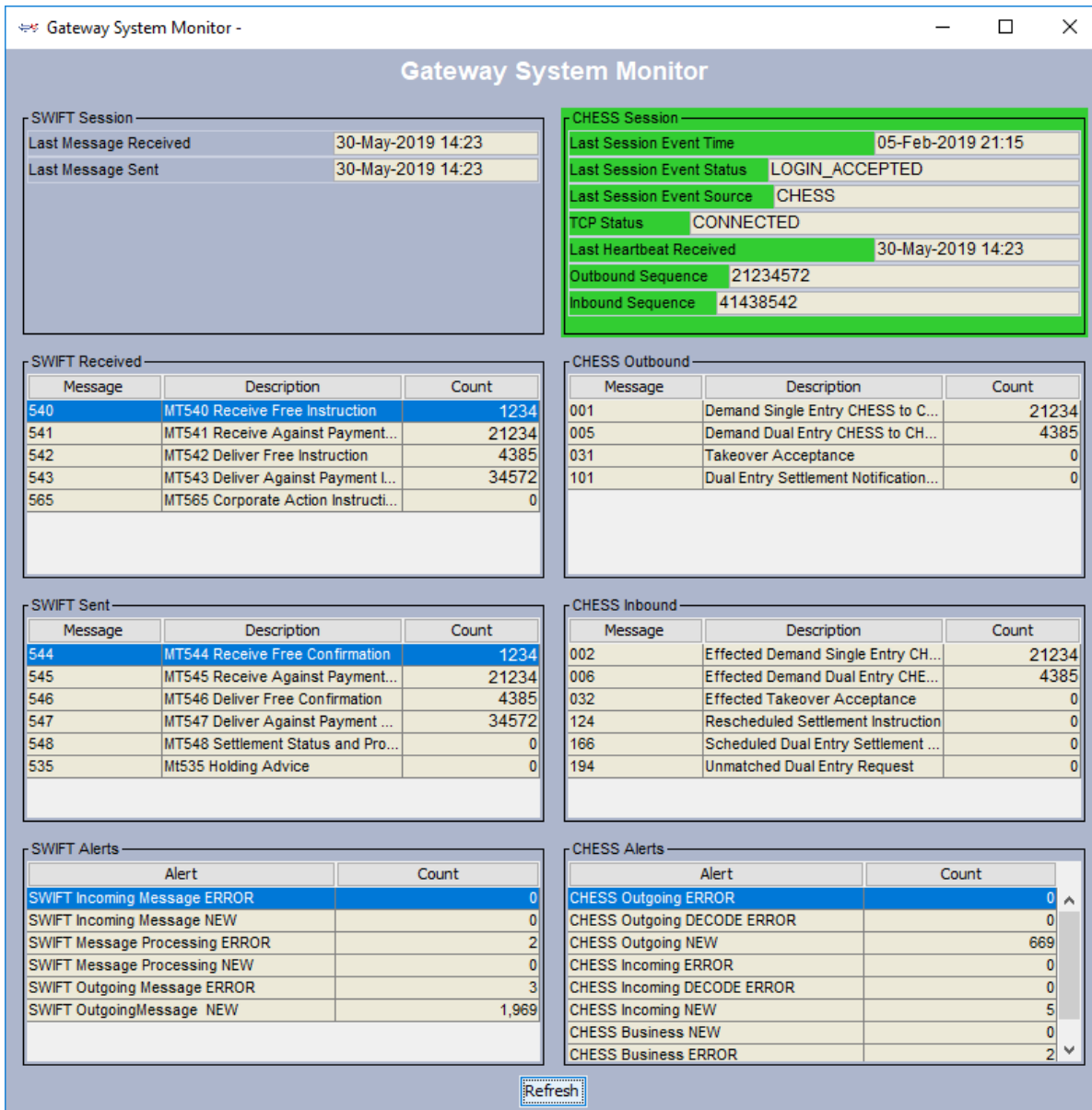


Figure 5 - SecuritEase CHES Message Parameters and Conversation

Reporting

The SecuritEase ASX Gateway has a comprehensive library of message, statistical, user and audit reports. Reports can be scheduled for automatic production at specified times and e-mailed to nominated recipients. You have secure read access to all the data in the SecuritEase ASX Gateway database so you can write your own customised reports if required, and add them in to the SecuritEase ASX Gateway report library.

Reports run interactively are initially displayed on the screen and can be printed or saved in various file formats including; PDF, RTF, XLS, HTML and CSV. Alternatively, the extensive report scheduling module can automatically generate reports and have them delivered to a user's e-mail inbox, printed or archived to a file store.

ASX CHESSE Messaging Accreditation

The SecuritEase ASX Gateway is fully accredited to ASX's latest and most exacting External Interface Specification (EIS), including the AMO and mFund messages. SecuritEase maintains CHESSE messaging and communication accreditation and commits to quickly implement all operational changes to CHESSE announced by ASX.

ASX CHESSE Communications Accreditation

Communication between your systems and CHESSE must be encrypted and authenticated in conformance with Australian Standard AS2805 as specified in ASX's EIS. The SecuritEase ASX Gateway does this so no additional third party hardware or software is needed for the connection to CHESSE.

Technology Platform

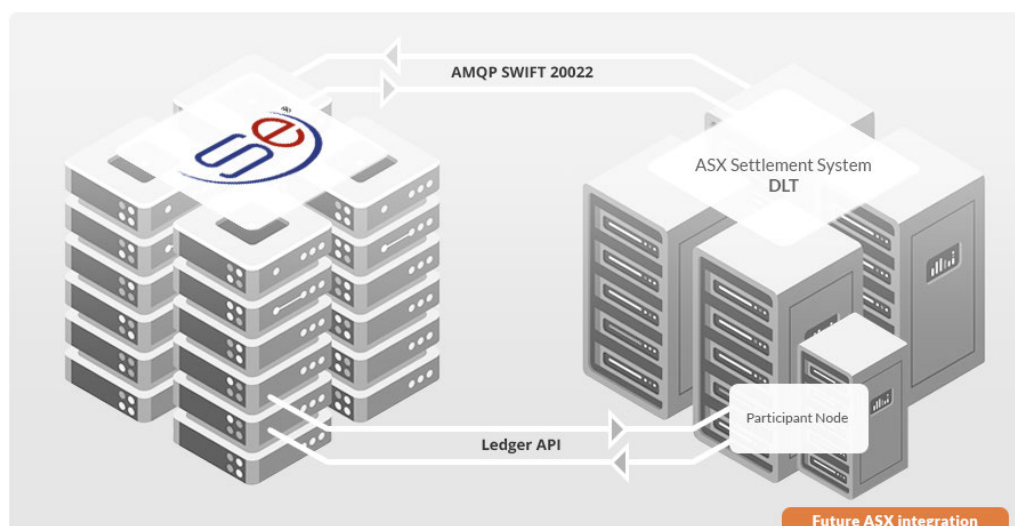
The SecuritEase ASX Gateway application operates on the Microsoft Windows and Linux platforms. Deployment can be on a PC, a server system or in a virtualised environment as required to meet your availability, performance, and cost requirements.

ASX CHESSE Replacement Project

The ASX has embarked on a project to replace its CHESSE settlement system with distributed ledger technology (DLT) based on blockchain. This will require all ASX participants that use CHESSE messaging to upgrade their systems to operate using a new interface based on SWIFT ISO 20022 messaging.

It is anticipated that ASX participants that use the SecuritEase system will transition from CHESSE to the new ISO 20022 messaging interface in a largely seamless, low impact manner. Whilst there will be some functional change required at the user interface due to the structural change in settlement implemented by the ASX, we are working with licensees to ensure that this has minimal impact on their operations.

The SecuritEase ASX Gateway will support both CHESSE and ISO messaging via configuration for a seamless cutover. SecuritEase subject matter experts are actively working with the ASX towards the replacement of CHESSE. We are engaged in ASX working groups and technology sessions, and we have frequent one-on-one discussions with ASX representatives to ensure that the SecuritEase build progresses smoothly and efficiently.



SecuritEase adopted an iterative build, test and deploy approach many years ago. Our approach aligns with the continuous specify-build-deliver process being used by ASX to deliver new versions of ISO 20022 messaging to the ASX's Customer Development Environment (CDE). This alignment in development methodology allows SecuritEase to incorporate new functionality in an agile manner, and allows new functionality to be tested in the CDE at the earliest possible time.